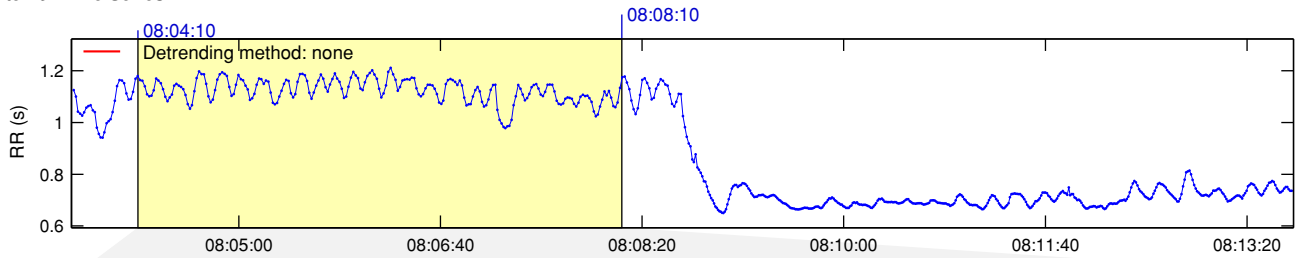
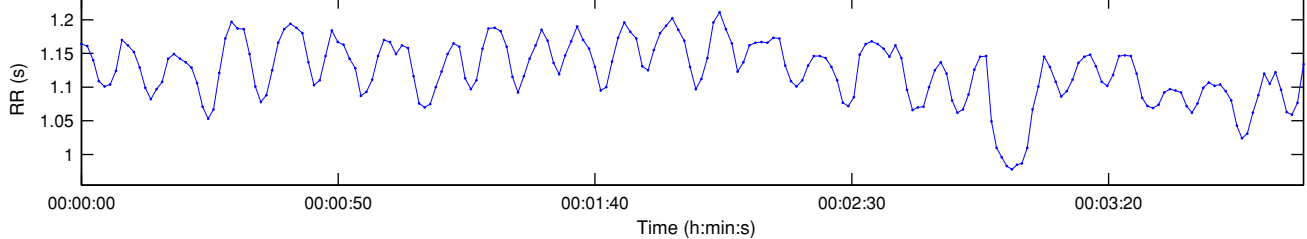


RR Interval Time Series

Results for single samples: sample 1/2



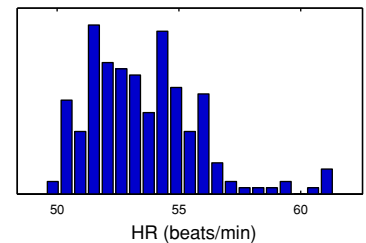
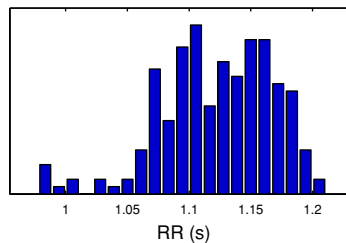
Selected RR Series



Time-Domain Results

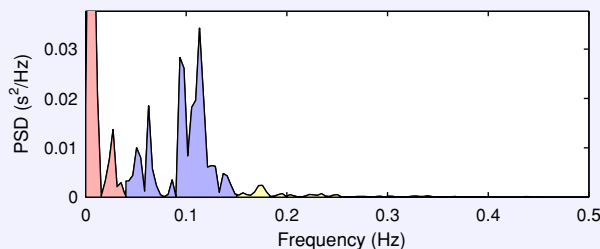
Variable	Units	Value
Mean RR*	(ms)	1122.5
STD RR (SDNN)	(ms)	45.5
Mean HR*	(1/min)	53.54
STD HR	(1/min)	2.24
RMSSD	(ms)	24.9
NN50	(count)	7
pNN50	(%)	3.3
RR triangular index		9.682
TINN	(ms)	0.0

Distributions*



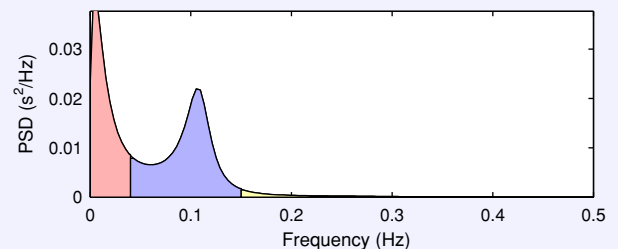
Frequency-Domain Results

FFT spectrum (Welch's periodogram: 256 s window with 50% overlap)



Frequency Band	Peak (Hz)	Power (ms ²)	Power (%)	Power (n.u.)
VLF (0-0.04 Hz)	0.0039	815	44.3	
LF (0.04-0.15 Hz)	0.1133	955	52.0	93.4
HF (0.15-0.4 Hz)	0.1758	68	3.7	6.6
Total		1837		
LF/HF		14.123		

AR Spectrum (AR model order = 16, not factorized)

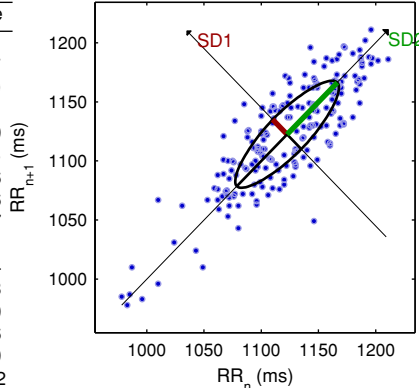


Frequency Band	Peak (Hz)	Power (ms ²)	Power (%)	Power (n.u.)
VLF (0-0.04 Hz)	0.0039	872	43.7	
LF (0.04-0.15 Hz)	0.1055	1061	53.2	94.4
HF (0.15-0.4 Hz)	0.1523	62	3.1	5.6
Total		1996		
LF/HF		16.992		

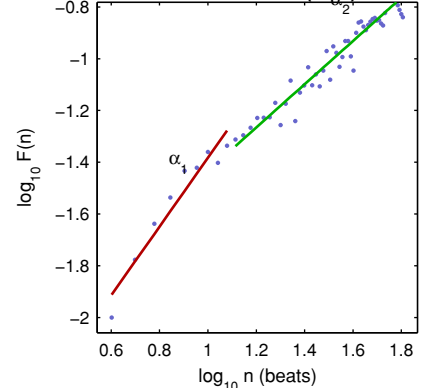
Nonlinear Results

Variable	Units	Value
Poincare plot		
SD1	(ms)	17.7
SD2	(ms)	62.0
Recurrence plot		
Mean line length (Lmean)	(beats)	10.20
Max line length (Lmax)	(beats)	203
Recurrence rate (REC)	(%)	30.36
Determinism (DET)	(%)	98.16
Shannon Entropy (ShanEn)		3.067
Other		
Approximate entropy (ApEn)		0.914
Sample entropy (SampEn)		1.233
Detrended fluctuations (DFA): α_1		1.330
Detrended fluctuations (DFA): α_2		0.836
Correlation dimension (D2)		3.110
Multiscale entropy (MSE)		0.545 - 3.372

Poincare Plot



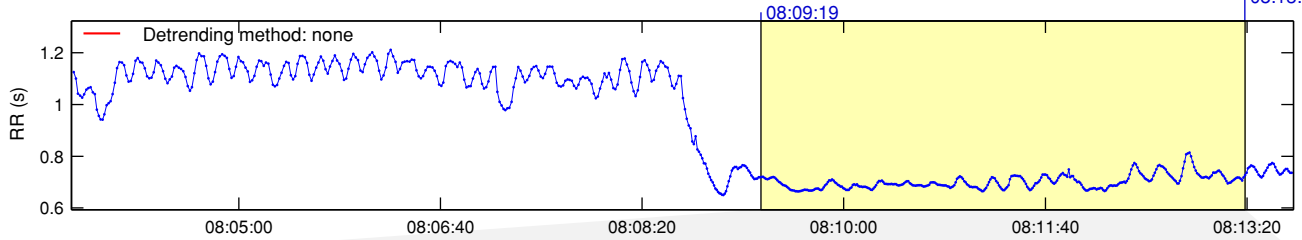
Detrended fluctuations (DFA)



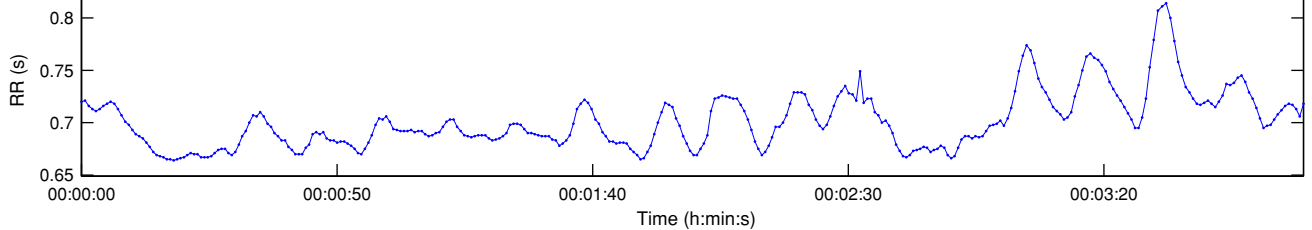
*Results are calculated from the non-detrended selected RR series.

RR Interval Time Series

Results for single samples: sample 2/2



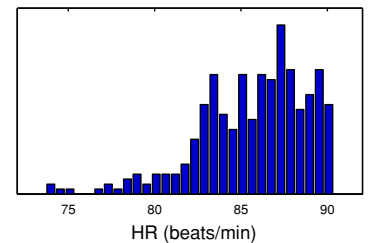
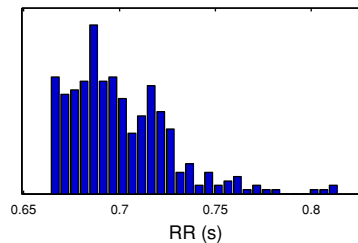
Selected RR Series



Time-Domain Results

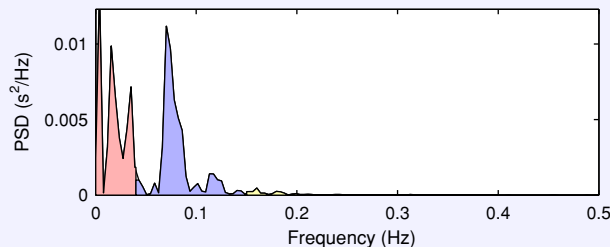
Variable	Units	Value
Mean RR*	(ms)	700.9
STD RR (SDNN)	(ms)	26.7
Mean HR*	(1/min)	85.72
STD HR	(1/min)	3.13
RMSSD	(ms)	7.0
NN50	(count)	0
pNN50	(%)	0.0
RR triangular index		6.840
TINN	(ms)	135.0

Distributions*



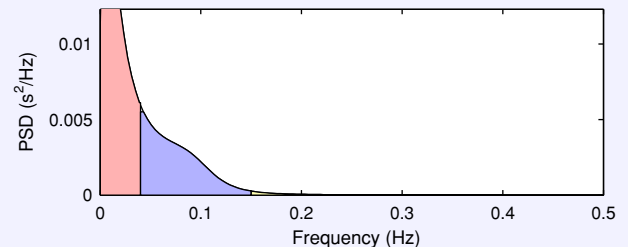
Frequency-Domain Results

FFT spectrum (Welch's periodogram: 256 s window with 50% overlap)



Frequency Band	Peak (Hz)	Power (ms ²)	Power (%)	Power (n.u.)
VLF (0-0.04 Hz)	0.0039	209	49.5	
LF (0.04-0.15 Hz)	0.0703	202	47.9	94.9
HF (0.15-0.4 Hz)	0.1602	11	2.6	5.1
Total		422		
LF/HF		18.632		

AR Spectrum (AR model order = 16, not factorized)

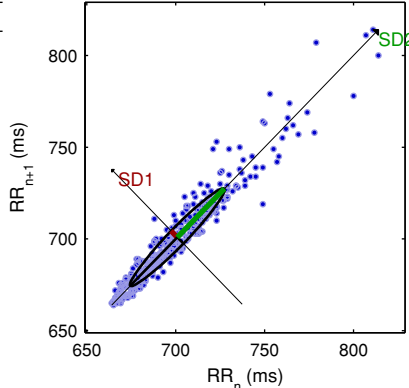


Frequency Band	Peak (Hz)	Power (ms ²)	Power (%)	Power (n.u.)
VLF (0-0.04 Hz)	0.0039	515	64.8	
LF (0.04-0.15 Hz)	0.0430	271	34.1	96.8
HF (0.15-0.4 Hz)	0.1523	9	1.1	3.2
Total		795		
LF/HF		29.975		

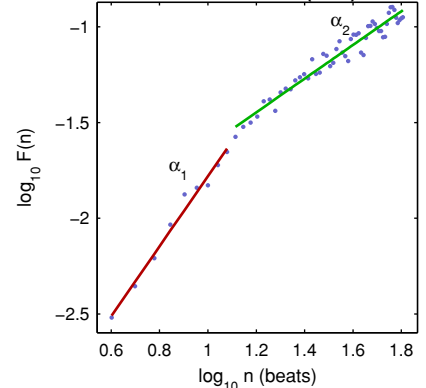
Nonlinear Results

Variable	Units	Value
Poincare plot		
SD1	(ms)	4.9
SD2	(ms)	37.4
Recurrence plot		
Mean line length (Lmean)	(beats)	17.30
Max line length (Lmax)	(beats)	332
Recurrence rate (REC)	(%)	47.73
Determinism (DET)	(%)	99.70
Shannon Entropy (ShanEn)		3.532
Other		
Approximate entropy (ApEn)		0.601
Sample entropy (SampEn)		0.527
Detrended fluctuations (DFA): α_1		1.829
Detrended fluctuations (DFA): α_2		0.880
Correlation dimension (D2)		0.504
Multiscale entropy (MSE)		0.281 - 1.542

Poincare Plot



Detrended fluctuations (DFA)



*Results are calculated from the non-detrended selected RR series.