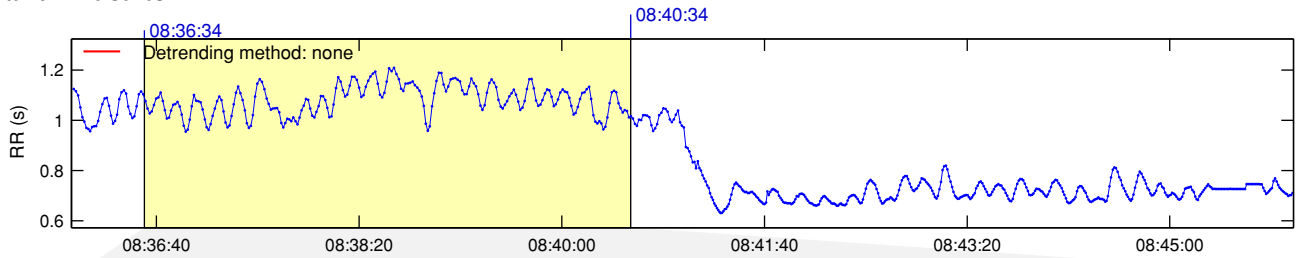
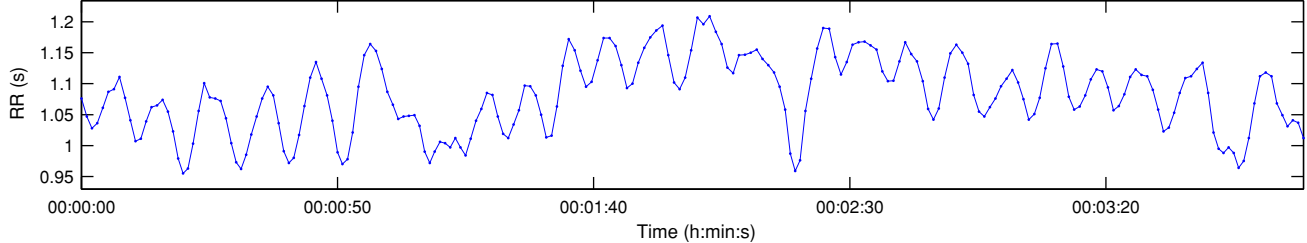


RR Interval Time Series

Results for single samples: sample 1/2



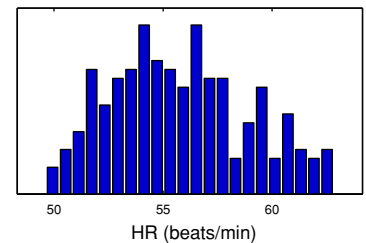
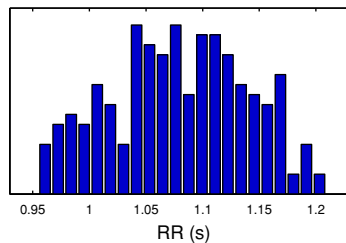
Selected RR Series



Time-Domain Results

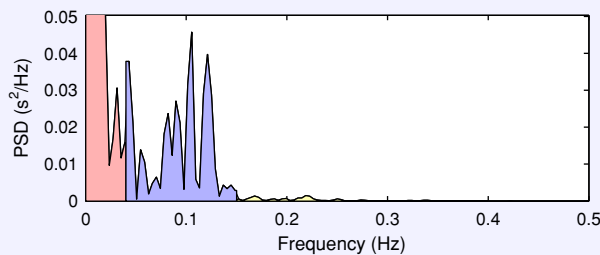
Variable	Units	Value
Mean RR*	(ms)	1079.4
STD RR (SDNN)	(ms)	60.0
Mean HR*	(1/min)	55.76
STD HR	(1/min)	3.13
RMSSD	(ms)	28.7
NN50	(count)	12
pNN50	(%)	5.4
RR triangular index		17.077
TINN	(ms)	50.0

Distributions*



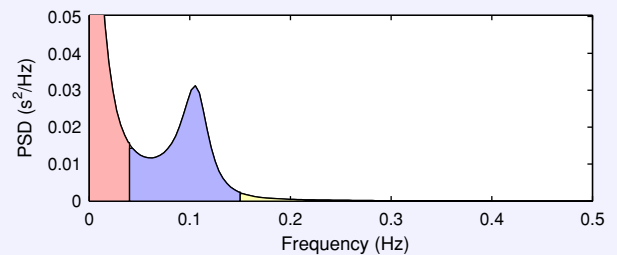
Frequency-Domain Results

FFT spectrum (Welch's periodogram: 256 s window with 50% overlap)



Frequency Band	Peak (Hz)	Power (ms ²)	Power (%)	Power (n.u.)
VLF (0-0.04 Hz)	0.0039	2533	59.8	
LF (0.04-0.15 Hz)	0.1055	1636	38.6	95.9
HF (0.15-0.4 Hz)	0.2188	69	1.6	4.1
Total		4238		
LF/HF		23.631		

AR Spectrum (AR model order = 16, not factorized)

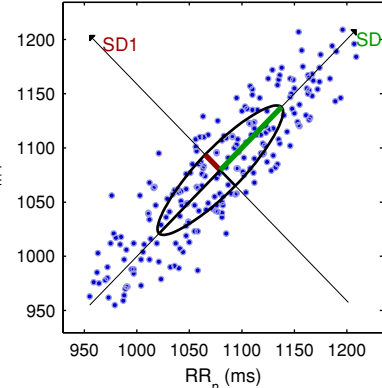


Frequency Band	Peak (Hz)	Power (ms ²)	Power (%)	Power (n.u.)
VLF (0-0.04 Hz)	0.0039	1795	50.9	
LF (0.04-0.15 Hz)	0.1055	1652	46.9	95.5
HF (0.15-0.4 Hz)	0.1523	78	2.2	4.5
Total		3525		
LF/HF		21.224		

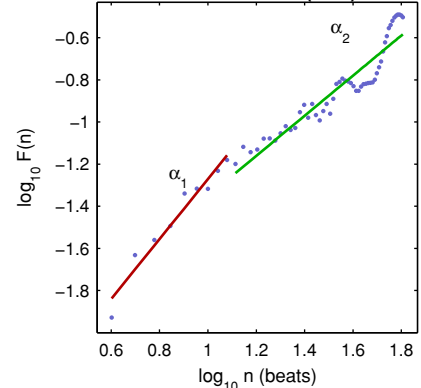
Nonlinear Results

Variable	Units	Value
Poincare plot		
SD1	(ms)	20.4
SD2	(ms)	82.5
Recurrence plot		
Mean line length (Lmean)	(beats)	8.78
Max line length (Lmax)	(beats)	212
Recurrence rate (REC)	(%)	26.30
Determinism (DET)	(%)	98.59
Shannon Entropy (ShanEn)		2.884
Other		
Approximate entropy (ApEn)		0.873
Sample entropy (SampEn)		1.099
Detrended fluctuations (DFA): α_1		1.425
Detrended fluctuations (DFA): α_2		0.952
Correlation dimension (D2)		2.993
Multiscale entropy (MSE)		0.564 - 2.661

Poincare Plot



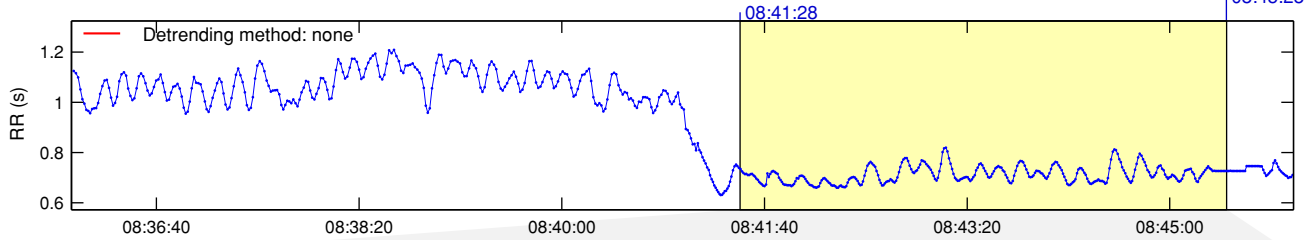
Detrended fluctuations (DFA)



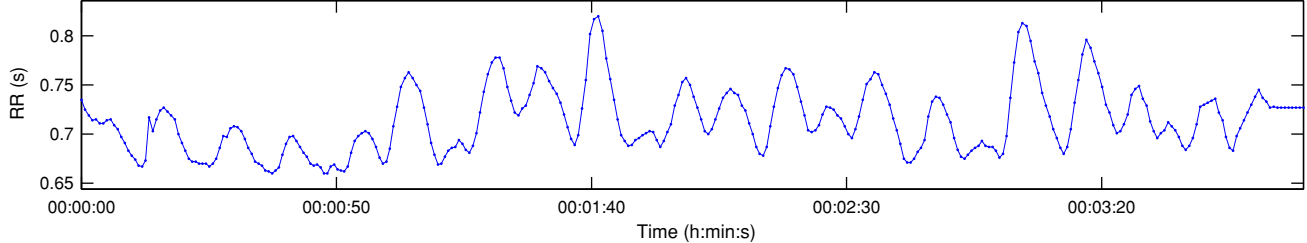
*Results are calculated from the non-detrended selected RR series.

RR Interval Time Series

Results for single samples: sample 2/2



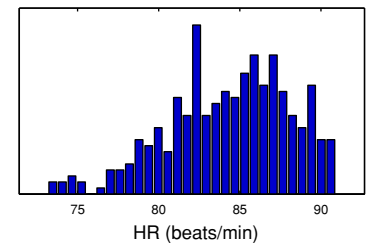
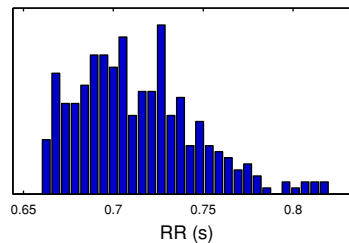
Selected RR Series



Time-Domain Results

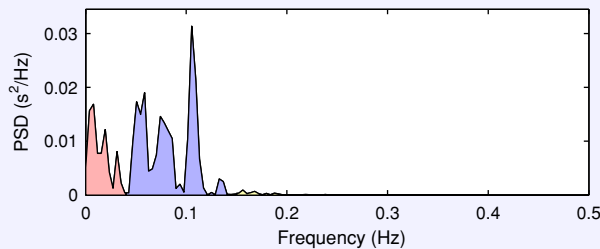
Variable	Units	Value
Mean RR*	(ms)	713.0
STD RR (SDNN)	(ms)	32.8
Mean HR*	(1/min)	84.32
STD HR	(1/min)	3.77
RMSSD	(ms)	11.1
NN50	(count)	0
pNN50	(%)	0.0
RR triangular index		9.361
TINN	(ms)	185.0

Distributions*



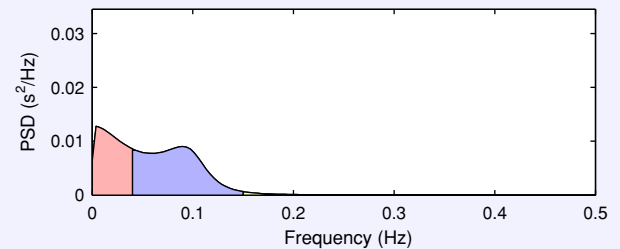
Frequency-Domain Results

FFT spectrum (Welch's periodogram: 256 s window with 50% overlap)



Frequency Band	Peak (Hz)	Power (ms ²)	Power (%)	Power (n.u.)
VLF (0-0.04 Hz)	0.0078	308	26.8	
LF (0.04-0.15 Hz)	0.1055	822	71.5	97.6
HF (0.15-0.4 Hz)	0.1563	20	1.7	2.4
Total		1150		
LF/HF		41.374		

AR Spectrum (AR model order = 16, not factorized)

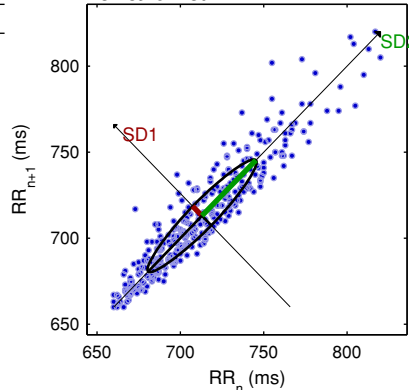


Frequency Band	Peak (Hz)	Power (ms ²)	Power (%)	Power (n.u.)
VLF (0-0.04 Hz)	0.0039	426	38.6	
LF (0.04-0.15 Hz)	0.0898	659	59.7	97.3
HF (0.15-0.4 Hz)	0.1523	19	1.7	2.7
Total		1103		
LF/HF		35.545		

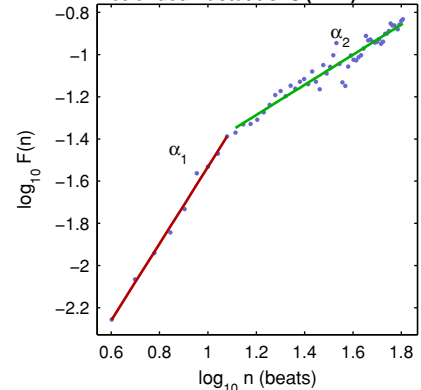
Nonlinear Results

Variable	Units	Value
Poincare plot		
SD1	(ms)	7.9
SD2	(ms)	45.7
Recurrence plot		
Mean line length (Lmean)	(beats)	10.72
Max line length (Lmax)	(beats)	327
Recurrence rate (REC)	(%)	35.79
Determinism (DET)	(%)	99.47
Shannon Entropy (ShanEn)		3.167
Other		
Approximate entropy (ApEn)		0.719
Sample entropy (SampEn)		0.758
Detrended fluctuations (DFA): α_1		1.819
Detrended fluctuations (DFA): α_2		0.714
Correlation dimension (D2)		1.407
Multiscale entropy (MSE)		0.758 - 2.727

Poincare Plot



Detrended fluctuations (DFA)



*Results are calculated from the non-detrended selected RR series.