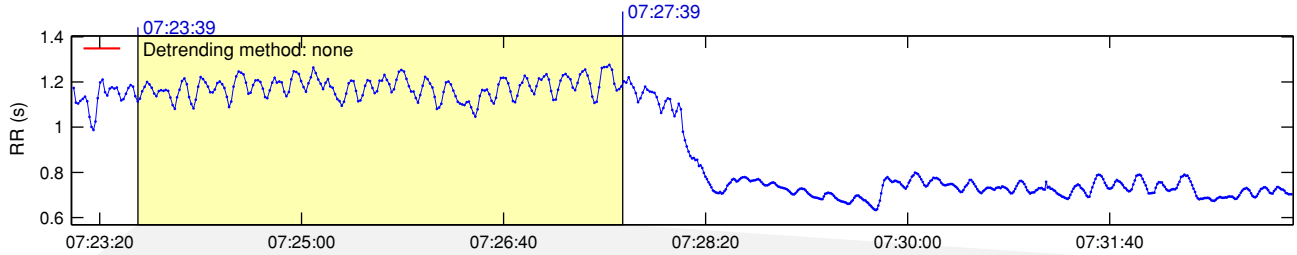
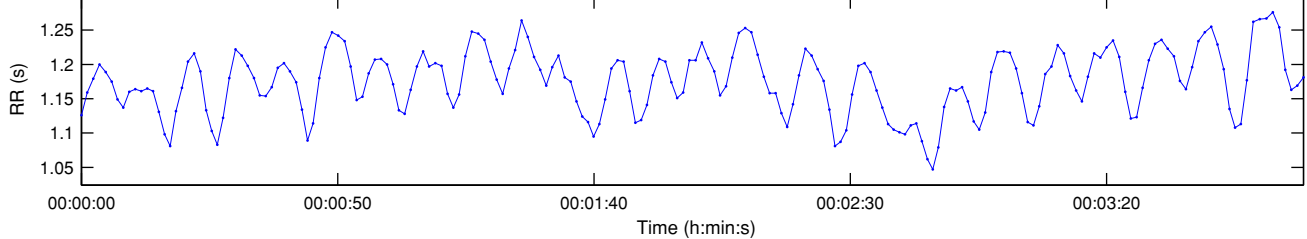


## RR Interval Time Series

Results for single samples: sample 1/2



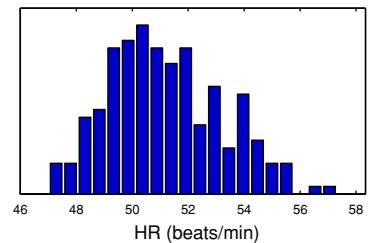
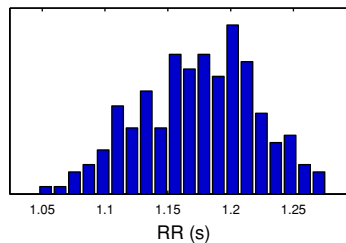
## Selected RR Series



## Time-Domain Results

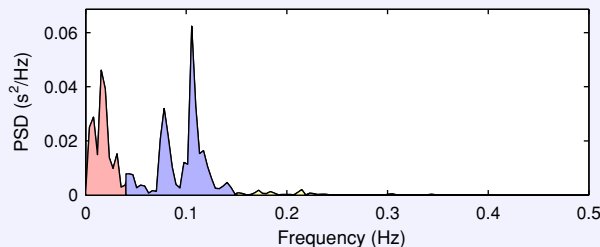
Variable	Units	Value
Mean RR*	(ms)	1174.2
STD RR (SDNN)	(ms)	46.2
Mean HR*	(1/min)	51.18
STD HR	(1/min)	2.04
RMSSD	(ms)	29.0
NN50	(count)	14
pNN50	(%)	6.9
RR triangular index		10.737
TINN	(ms)	0.0

## Distributions\*



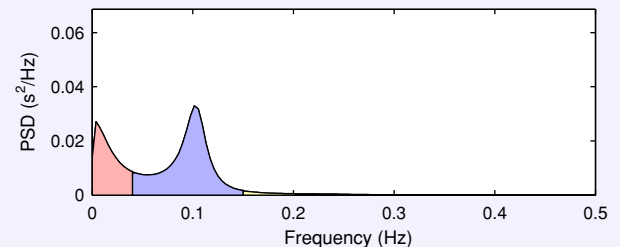
## Frequency-Domain Results

**FFT spectrum** (Welch's periodogram: 256 s window with 50% overlap)



Frequency Band	Peak (Hz)	Power (ms <sup>2</sup> )	Power (%)	Power (n.u.)
VLF (0-0.04 Hz)	0.0156	778	38.3	
LF (0.04-0.15 Hz)	0.1055	1186	58.5	94.8
HF (0.15-0.4 Hz)	0.2148	64	3.2	5.1
Total		2029		
LF/HF		18.454		

**AR Spectrum** (AR model order = 16, not factorized)

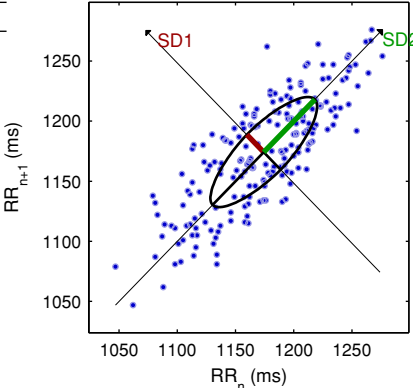


Frequency Band	Peak (Hz)	Power (ms <sup>2</sup> )	Power (%)	Power (n.u.)
VLF (0-0.04 Hz)	0.0039	655	31.6	
LF (0.04-0.15 Hz)	0.1016	1345	64.8	94.7
HF (0.15-0.4 Hz)	0.1523	76	3.7	5.3
Total		2077		
LF/HF		17.718		

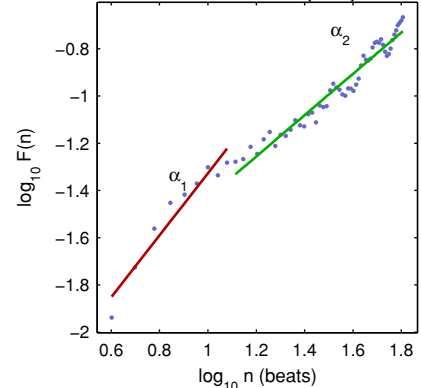
## Nonlinear Results

Variable	Units	Value
<b>Poincare plot</b>		
SD1	(ms)	20.5
SD2	(ms)	62.0
<b>Recurrence plot</b>		
Mean line length (Lmean)	(beats)	9.01
Max line length (Lmax)	(beats)	194
Recurrence rate (REC)	(%)	23.73
Determinism (DET)	(%)	98.05
Shannon Entropy (ShanEn)		2.884
<b>Other</b>		
Approximate entropy (ApEn)		0.830
Sample entropy (SampEn)		1.265
Detrended fluctuations (DFA): $\alpha_1$		1.313
Detrended fluctuations (DFA): $\alpha_2$		0.875
Correlation dimension (D2)		3.246
Multiscale entropy (MSE)		0.852 - 2.381

## Poincare Plot



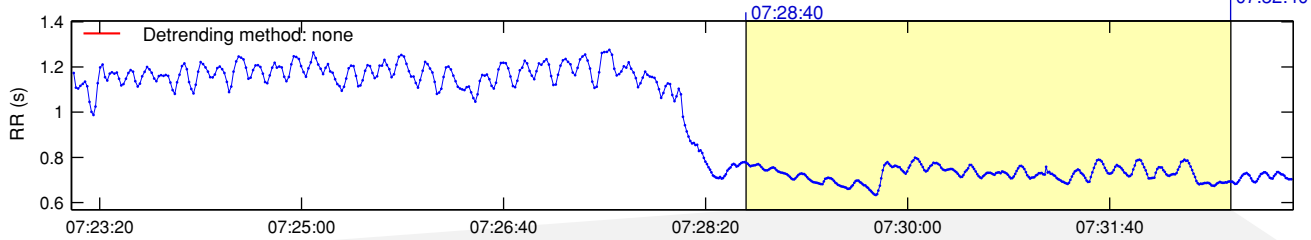
## Detrended fluctuations (DFA)



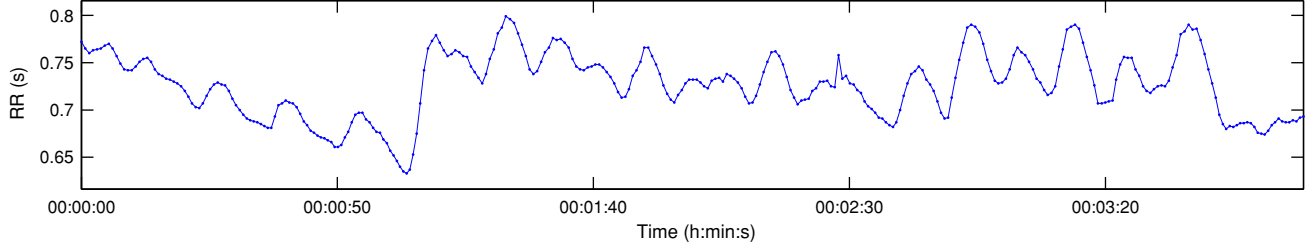
\*Results are calculated from the non-detrended selected RR series.

## RR Interval Time Series

Results for single samples: sample 2/2



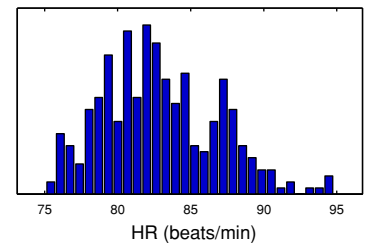
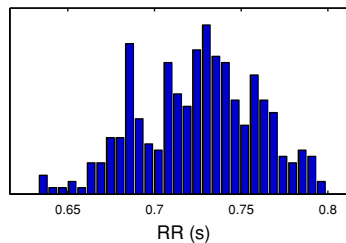
## Selected RR Series



## Time-Domain Results

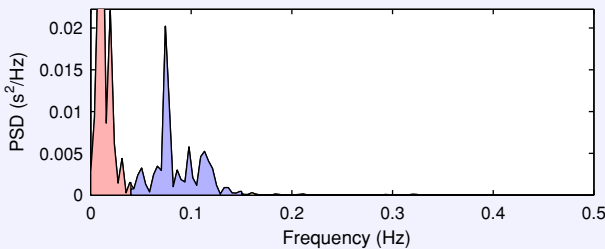
Variable	Units	Value
Mean RR*	(ms)	725.5
STD RR (SDNN)	(ms)	33.9
Mean HR*	(1/min)	82.88
STD HR	(1/min)	3.93
RMSSD	(ms)	8.7
NN50	(count)	0
pNN50	(%)	0.0
RR triangular index		8.684
TINN	(ms)	155.0

## Distributions\*



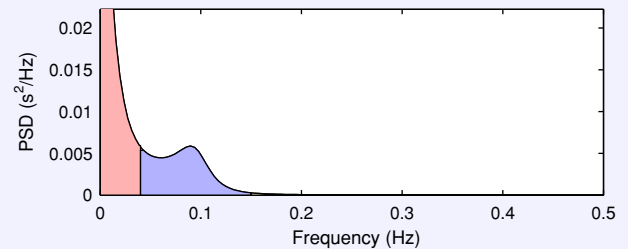
## Frequency-Domain Results

**FFT spectrum** (Welch's periodogram: 256 s window with 50% overlap)



Frequency Band	Peak (Hz)	Power (ms <sup>2</sup> )	Power (%)	Power (n.u.)
VLF (0-0.04 Hz)	0.0117	473	58.0	
LF (0.04-0.15 Hz)	0.0742	335	41.1	97.7
HF (0.15-0.4 Hz)	0.1602	8	1.0	2.3
Total		815		
LF/HF		42.202		

**AR Spectrum** (AR model order = 16, not factorized)

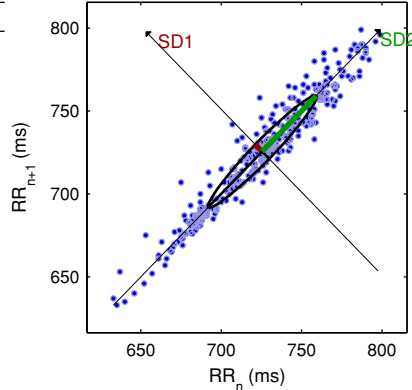


Frequency Band	Peak (Hz)	Power (ms <sup>2</sup> )	Power (%)	Power (n.u.)
VLF (0-0.04 Hz)	0.0039	705	64.3	
LF (0.04-0.15 Hz)	0.0898	382	34.9	97.6
HF (0.15-0.4 Hz)	0.1523	9	0.9	2.4
Total		1096		
LF/HF		40.603		

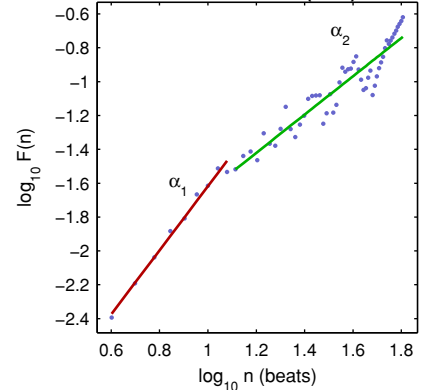
## Nonlinear Results

Variable	Units	Value
<b>Poincare plot</b>		
SD1	(ms)	6.1
SD2	(ms)	47.5
<b>Recurrence plot</b>		
Mean line length (Lmean)	(beats)	15.37
Max line length (Lmax)	(beats)	320
Recurrence rate (REC)	(%)	41.41
Determinism (DET)	(%)	99.69
Shannon Entropy (ShanEn)		3.550
<b>Other</b>		
Approximate entropy (ApEn)		0.642
Sample entropy (SampEn)		0.627
Detrended fluctuations (DFA): $\alpha_1$		1.895
Detrended fluctuations (DFA): $\alpha_2$		1.132
Correlation dimension (D2)		1.209
Multiscale entropy (MSE)		0.596 - 2.434

## Poincare Plot



## Detrended fluctuations (DFA)



\*Results are calculated from the non-detrended selected RR series.