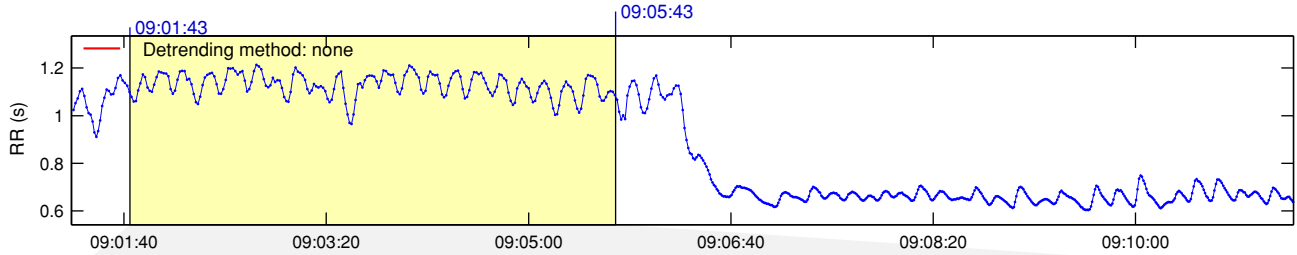
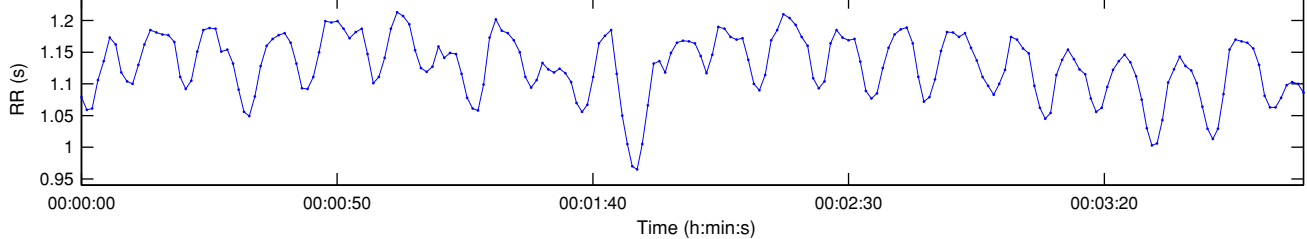


RR Interval Time Series

Results for single samples: sample 1/2



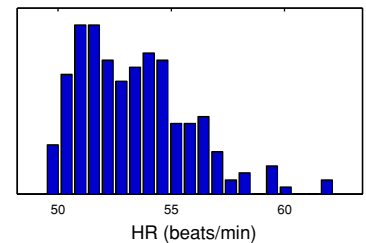
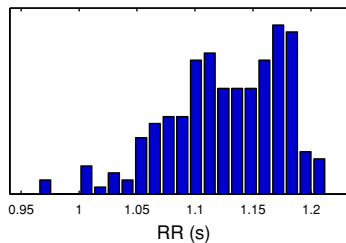
Selected RR Series



Time-Domain Results

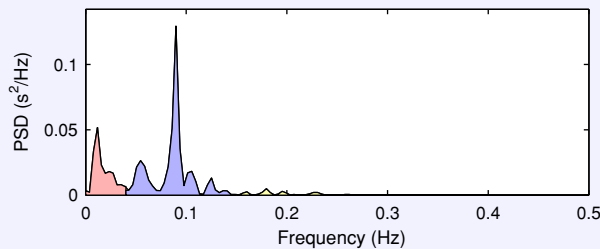
Variable	Units	Value
Mean RR*	(ms)	1126.7
STD RR (SDNN)	(ms)	49.5
Mean HR*	(1/min)	53.36
STD HR	(1/min)	2.42
RMSSD	(ms)	28.3
NN50	(count)	17
pNN50	(%)	8.0
RR triangular index		10.650
TINN	(ms)	0.0

Distributions*



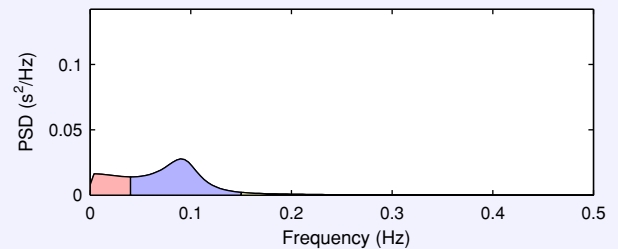
Frequency-Domain Results

FFT spectrum (Welch's periodogram: 256 s window with 50% overlap)



Frequency Band	Peak (Hz)	Power (ms ²)	Power (%)	Power (n.u.)
VLF (0-0.04 Hz)	0.0117	716	28.0	
LF (0.04-0.15 Hz)	0.0898	1730	67.6	93.8
HF (0.15-0.4 Hz)	0.1797	115	4.5	6.2
Total		2561		
LF/HF		15.077		

AR Spectrum (AR model order = 16, not factorized)

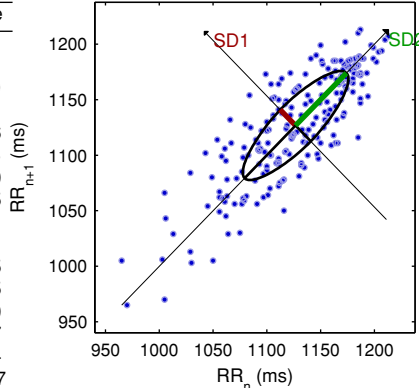


Frequency Band	Peak (Hz)	Power (ms ²)	Power (%)	Power (n.u.)
VLF (0-0.04 Hz)	0.0039	589	25.6	
LF (0.04-0.15 Hz)	0.0898	1625	70.5	94.8
HF (0.15-0.4 Hz)	0.1523	89	3.9	5.2
Total		2304		
LF/HF		18.177		

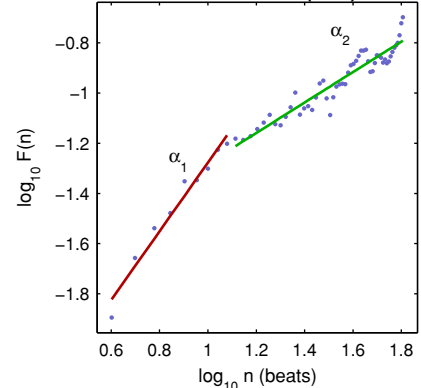
Nonlinear Results

Variable	Units	Value
Poincare plot		
SD1	(ms)	20.1
SD2	(ms)	67.0
Recurrence plot		
Mean line length (Lmean)	(beats)	10.06
Max line length (Lmax)	(beats)	203
Recurrence rate (REC)	(%)	26.70
Determinism (DET)	(%)	98.85
Shannon Entropy (ShanEn)		2.981
Other		
Approximate entropy (ApEn)		0.865
Sample entropy (SampEn)		1.255
Detrended fluctuations (DFA): α_1		1.370
Detrended fluctuations (DFA): α_2		0.607
Correlation dimension (D2)		2.984
Multiscale entropy (MSE)		0.231 - 2.957

Poincare Plot



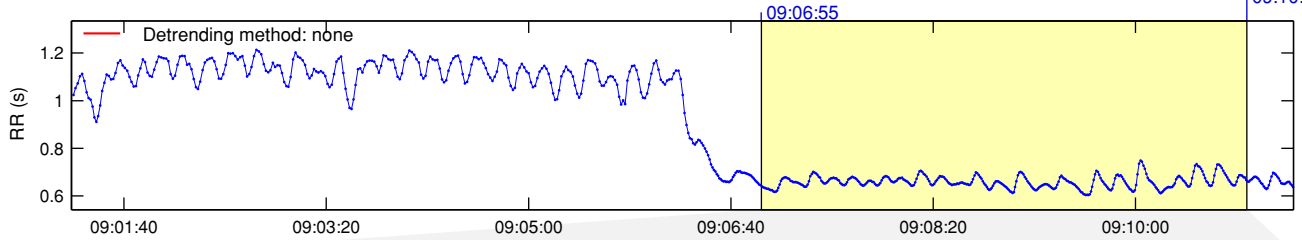
Detrended fluctuations (DFA)



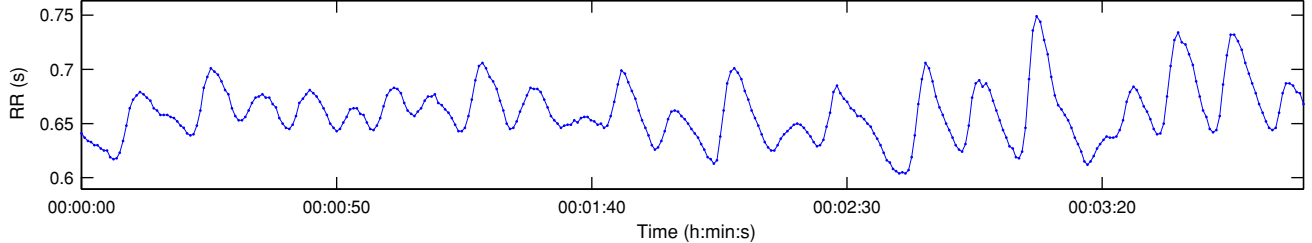
*Results are calculated from the non-detrended selected RR series.

RR Interval Time Series

Results for single samples: sample 2/2



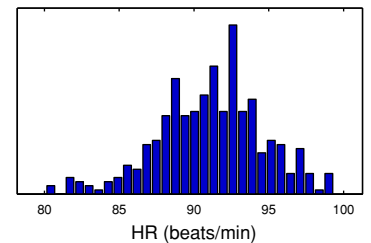
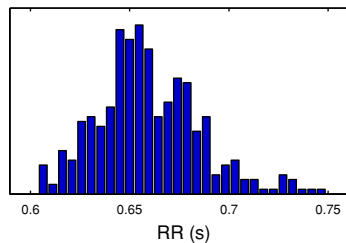
Selected RR Series



Time-Domain Results

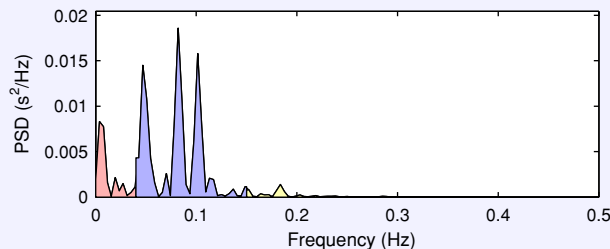
Variable	Units	Value
Mean RR*	(ms)	659.5
STD RR (SDNN)	(ms)	26.1
Mean HR*	(1/min)	91.12
STD HR	(1/min)	3.54
RMSSD	(ms)	9.1
NN50	(count)	0
pNN50	(%)	0.0
RR triangular index		7.000
TINN	(ms)	125.0

Distributions*



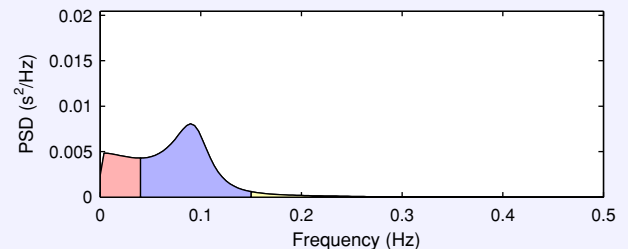
Frequency-Domain Results

FFT spectrum (Welch's periodogram: 256 s window with 50% overlap)



Frequency Band	Peak (Hz)	Power (ms ²)	Power (%)	Power (n.u.)
VLF (0-0.04 Hz)	0.0039	96	16.8	
LF (0.04-0.15 Hz)	0.0820	448	78.8	94.8
HF (0.15-0.4 Hz)	0.1836	24	4.3	5.2
Total		568		
LF/HF		18.287		

AR Spectrum (AR model order = 16, not factorized)

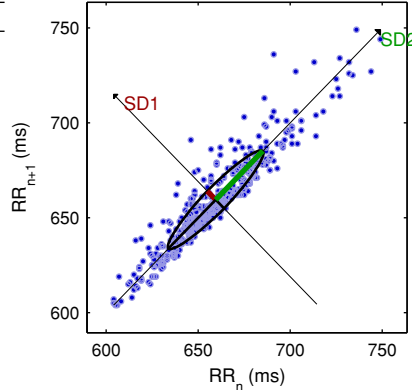


Frequency Band	Peak (Hz)	Power (ms ²)	Power (%)	Power (n.u.)
VLF (0-0.04 Hz)	0.0039	178	26.0	
LF (0.04-0.15 Hz)	0.0898	482	70.5	95.2
HF (0.15-0.4 Hz)	0.1523	24	3.5	4.8
Total		684		
LF/HF		19.911		

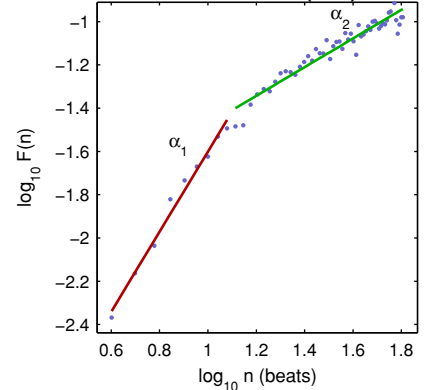
Nonlinear Results

Variable	Units	Value
Poincare plot		
SD1	(ms)	6.5
SD2	(ms)	36.3
Recurrence plot		
Mean line length (Lmean)	(beats)	12.50
Max line length (Lmax)	(beats)	354
Recurrence rate (REC)	(%)	38.85
Determinism (DET)	(%)	99.46
Shannon Entropy (ShanEn)		3.316
Other		
Approximate entropy (ApEn)		0.609
Sample entropy (SampEn)		0.618
Detrended fluctuations (DFA): α_1		1.852
Detrended fluctuations (DFA): α_2		0.662
Correlation dimension (D2)		0.618
Multiscale entropy (MSE)		0.618 - 2.188

Poincare Plot



Detrended fluctuations (DFA)



*Results are calculated from the non-detrended selected RR series.