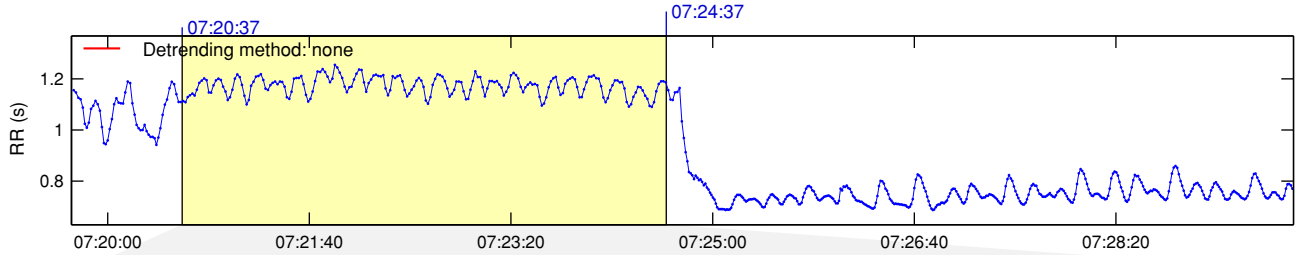
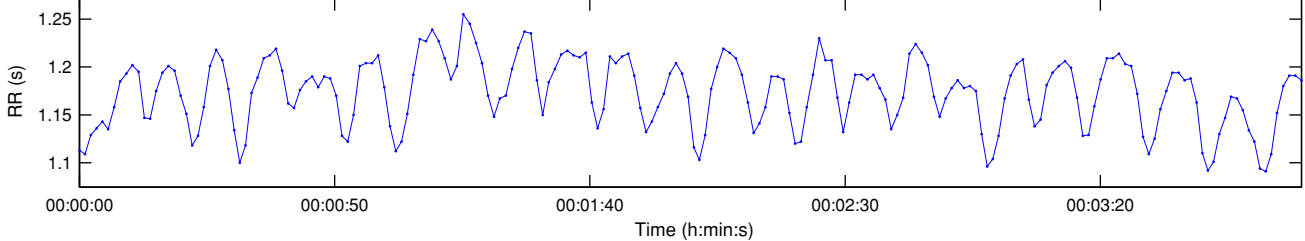


RR Interval Time Series

Results for single samples: sample 1/2



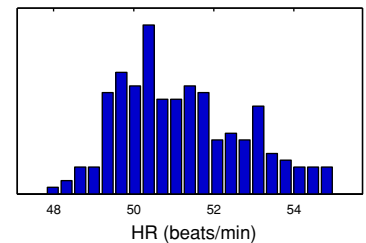
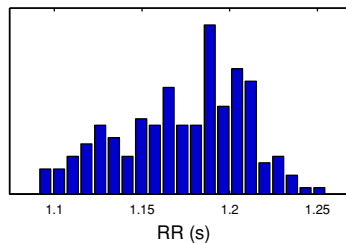
Selected RR Series



Time-Domain Results

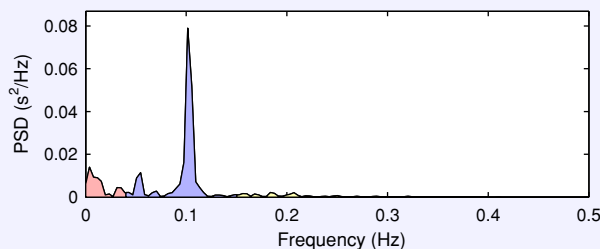
Variable	Units	Value
Mean RR*	(ms)	1173.0
STD RR (SDNN)	(ms)	35.5
Mean HR*	(1/min)	51.20
STD HR	(1/min)	1.57
RMSSD	(ms)	24.1
NN50	(count)	7
pNN50	(%)	3.4
RR triangular index		7.593
TINN	(ms)	0.0

Distributions*



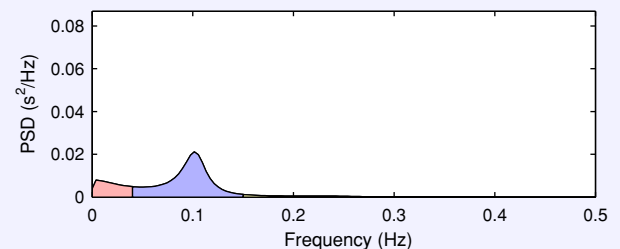
Frequency-Domain Results

FFT spectrum (Welch's periodogram: 256 s window with 50% overlap)



Frequency Band	Peak (Hz)	Power (ms ²)	Power (%)	Power (n.u.)
VLF (0-0.04 Hz)	0.0039	217	19.1	
LF (0.04-0.15 Hz)	0.1016	823	72.6	89.8
HF (0.15-0.4 Hz)	0.1836	94	8.3	10.2
Total		1133		
LF/HF		8.770		

AR Spectrum (AR model order = 16, not factorized)

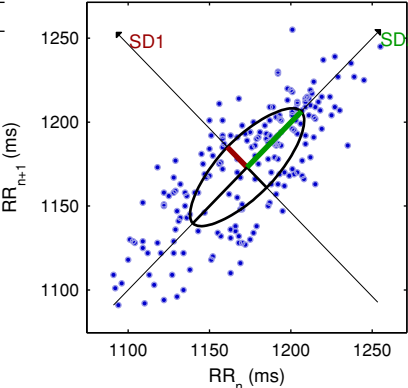


Frequency Band	Peak (Hz)	Power (ms ²)	Power (%)	Power (n.u.)
VLF (0-0.04 Hz)	0.0039	251	20.8	
LF (0.04-0.15 Hz)	0.1016	885	73.4	92.6
HF (0.15-0.4 Hz)	0.1523	70	5.8	7.4
Total		1207		
LF/HF		12.577		

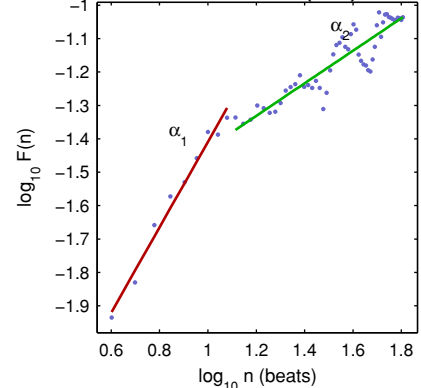
Nonlinear Results

Variable	Units	Value
Poincare plot		
SD1	(ms)	17.1
SD2	(ms)	47.1
Recurrence plot		
Mean line length (Lmean)	(beats)	10.76
Max line length (Lmax)	(beats)	195
Recurrence rate (REC)	(%)	24.04
Determinism (DET)	(%)	97.60
Shannon Entropy (ShanEn)		3.098
Other		
Approximate entropy (ApEn)		0.838
Sample entropy (SampEn)		1.287
Detrended fluctuations (DFA): α_1		1.279
Detrended fluctuations (DFA): α_2		0.487
Correlation dimension (D2)		3.032
Multiscale entropy (MSE)		0.821 - 2.472

Poincare Plot



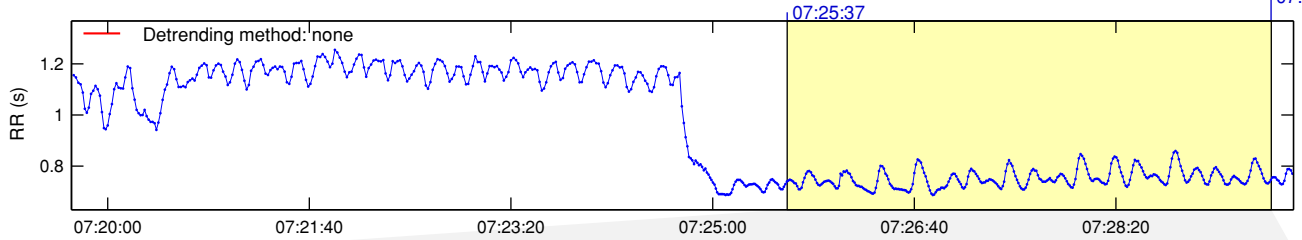
Detrended fluctuations (DFA)



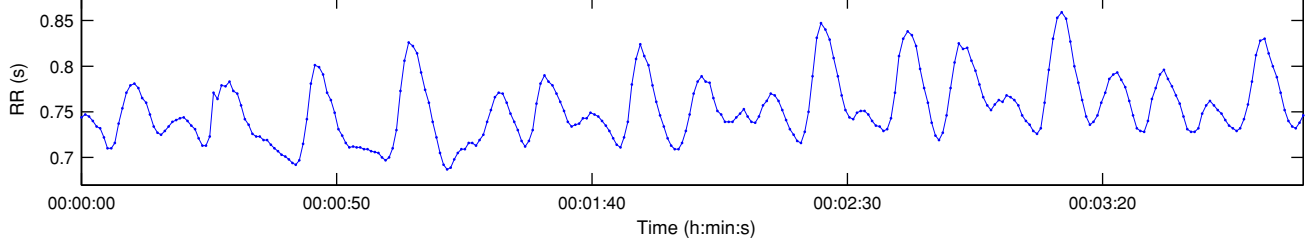
*Results are calculated from the non-detrended selected RR series.

RR Interval Time Series

Results for single samples: sample 2/2



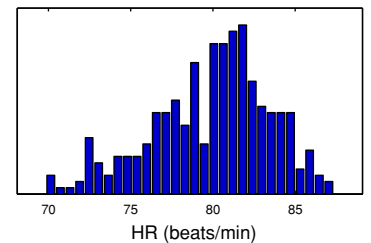
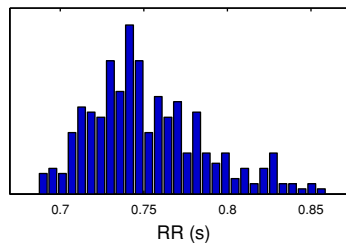
Selected RR Series



Time-Domain Results

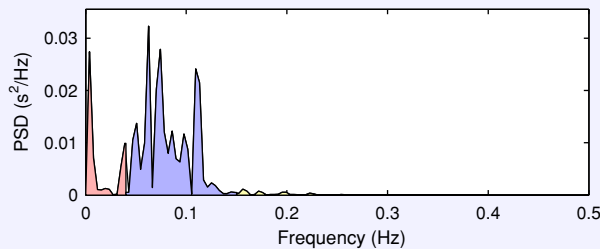
Variable	Units	Value
Mean RR*	(ms)	752.5
STD RR (SDNN)	(ms)	34.7
Mean HR*	(1/min)	79.90
STD HR	(1/min)	3.58
RMSSD	(ms)	13.3
NN50	(count)	0
pNN50	(%)	0.0
RR triangular index		7.780
TINN	(ms)	145.0

Distributions*



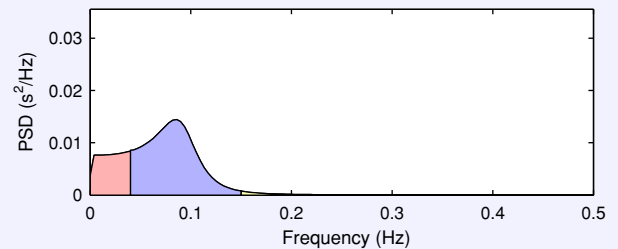
Frequency-Domain Results

FFT spectrum (Welch's periodogram: 256 s window with 50% overlap)



Frequency Band	Peak (Hz)	Power (ms ²)	Power (%)	Power (n.u.)
VLF (0-0.04 Hz)	0.0039	202	16.9	
LF (0.04-0.15 Hz)	0.0625	965	80.8	97.3
HF (0.15-0.4 Hz)	0.1563	27	2.2	2.7
Total		1193		
LF/HF		35.957		

AR Spectrum (AR model order = 16, not factorized)

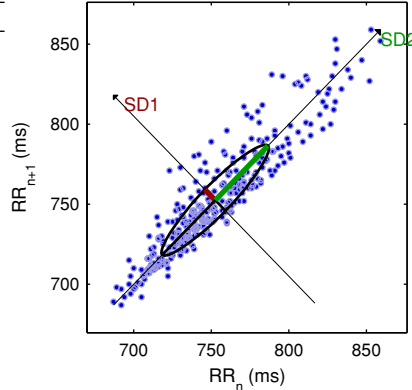


Frequency Band	Peak (Hz)	Power (ms ²)	Power (%)	Power (n.u.)
VLF (0-0.04 Hz)	0.0391	306	25.2	
LF (0.04-0.15 Hz)	0.0859	883	72.8	97.4
HF (0.15-0.4 Hz)	0.1523	24	2.0	2.6
Total		1212		
LF/HF		36.865		

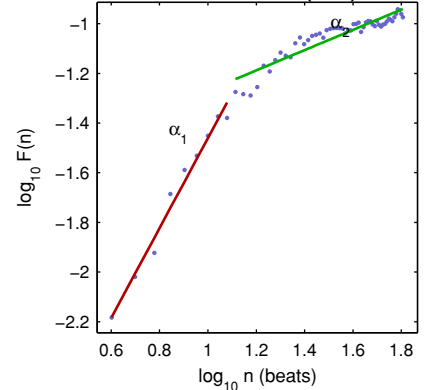
Nonlinear Results

Variable	Units	Value
Poincare plot		
SD1	(ms)	9.4
SD2	(ms)	48.2
Recurrence plot		
Mean line length (Lmean)	(beats)	11.11
Max line length (Lmax)	(beats)	309
Recurrence rate (REC)	(%)	35.07
Determinism (DET)	(%)	99.25
Shannon Entropy (ShanEn)		3.216
Other		
Approximate entropy (ApEn)		0.714
Sample entropy (SampEn)		0.736
Detrended fluctuations (DFA): α_1		1.811
Detrended fluctuations (DFA): α_2		0.408
Correlation dimension (D2)		1.801
Multiscale entropy (MSE)		0.736 - 2.338

Poincare Plot



Detrended fluctuations (DFA)



*Results are calculated from the non-detrended selected RR series.