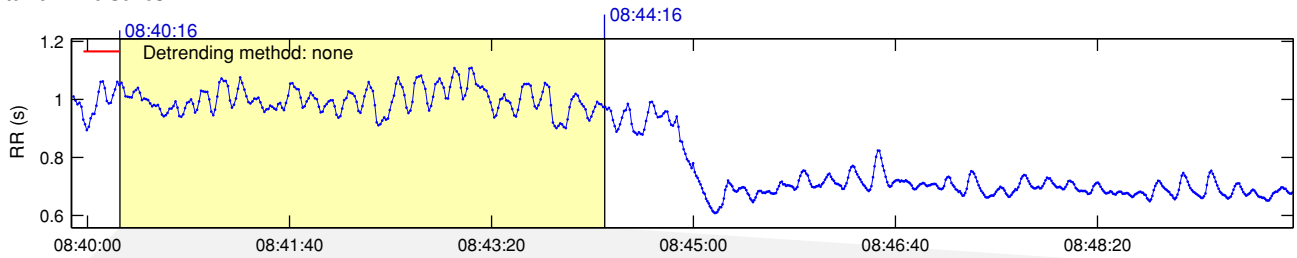
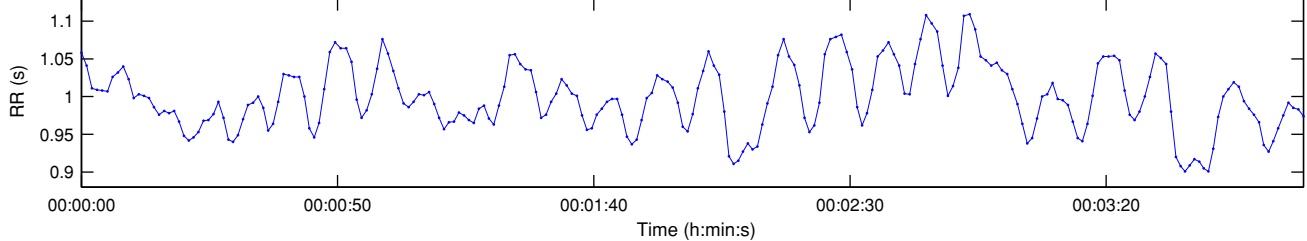


RR Interval Time Series

Results for single samples: sample 1/2



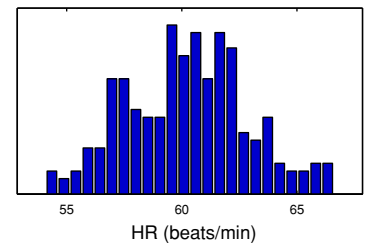
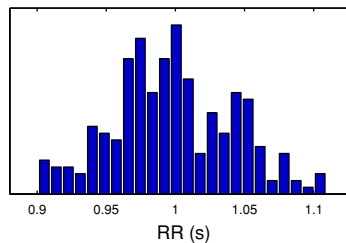
Selected RR Series



Time-Domain Results

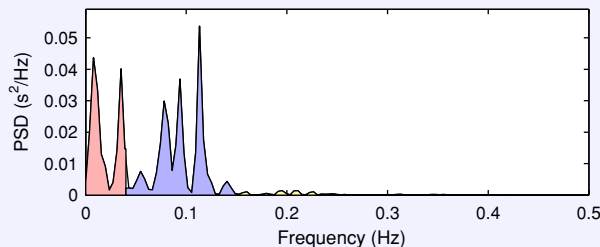
Variable	Units	Value
Mean RR*	(ms)	998.1
STD RR (SDNN)	(ms)	43.7
Mean HR*	(1/min)	60.23
STD HR	(1/min)	2.63
RMSSD	(ms)	22.1
NN50	(count)	7
pNN50	(%)	2.9
RR triangular index		10.909
TINN	(ms)	90.0

Distributions*



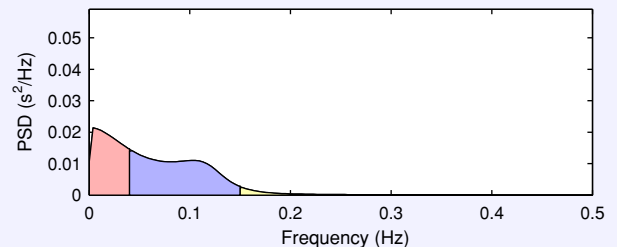
Frequency-Domain Results

FFT spectrum (Welch's periodogram: 256 s window with 50% overlap)



Frequency Band	Peak (Hz)	Power (ms ²)	Power (%)	Power (n.u.)
VLF (0-0.04 Hz)	0.0078	748	38.7	
LF (0.04-0.15 Hz)	0.1133	1126	58.2	94.8
HF (0.15-0.4 Hz)	0.1953	61	3.2	5.2
Total		1936		
LF/HF		18.371		

AR Spectrum (AR model order = 16, not factorized)

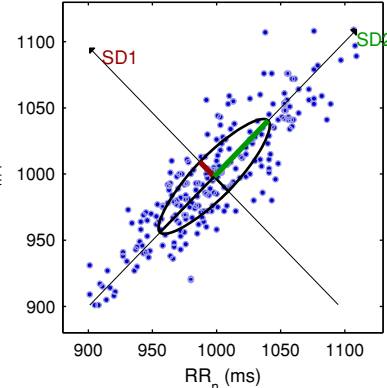


Frequency Band	Peak (Hz)	Power (ms ²)	Power (%)	Power (n.u.)
VLF (0-0.04 Hz)	0.0039	726	38.6	
LF (0.04-0.15 Hz)	0.0430	1074	57.1	93.1
HF (0.15-0.4 Hz)	0.1523	80	4.2	6.9
Total		1879		
LF/HF		13.476		

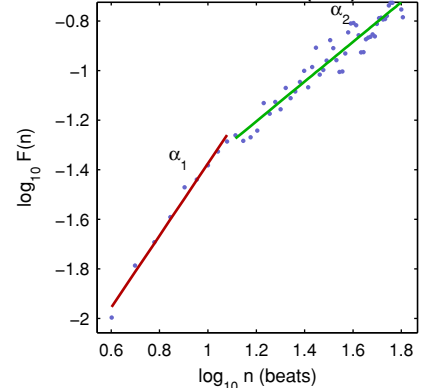
Nonlinear Results

Variable	Units	Value
Poincare plot		
SD1	(ms)	15.7
SD2	(ms)	59.7
Recurrence plot		
Mean line length (Lmean)	(beats)	9.76
Max line length (Lmax)	(beats)	230
Recurrence rate (REC)	(%)	28.49
Determinism (DET)	(%)	98.87
Shannon Entropy (ShanEn)		3.034
Other		
Approximate entropy (ApEn)		0.940
Sample entropy (SampEn)		1.303
Detrended fluctuations (DFA): α_1		1.452
Detrended fluctuations (DFA): α_2		0.802
Correlation dimension (D2)		2.991
Multiscale entropy (MSE)		0.950 - 2.076

Poincare Plot



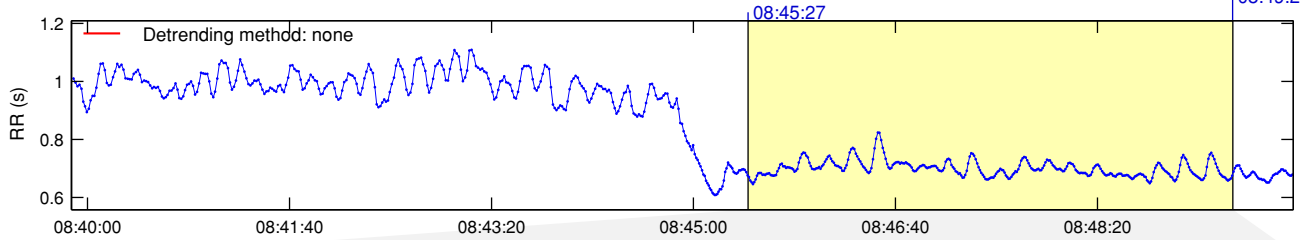
Detrended fluctuations (DFA)



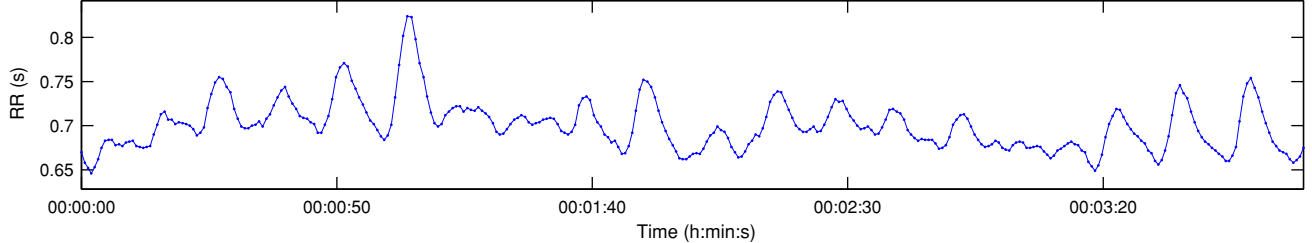
*Results are calculated from the non-detrended selected RR series.

RR Interval Time Series

Results for single samples: sample 2/2



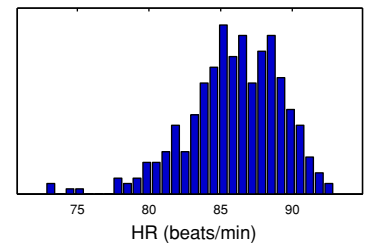
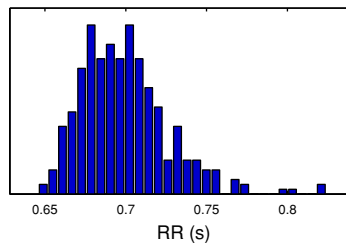
Selected RR Series



Time-Domain Results

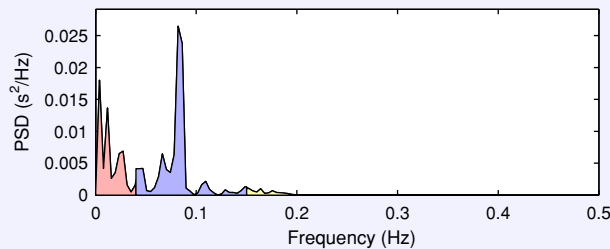
Variable	Units	Value
Mean RR*	(ms)	699.3
STD RR (SDNN)	(ms)	27.7
Mean HR*	(1/min)	85.93
STD HR	(1/min)	3.28
RMSSD	(ms)	9.0
NN50	(count)	0
pNN50	(%)	0.0
RR triangular index		7.298
TINN	(ms)	140.0

Distributions*



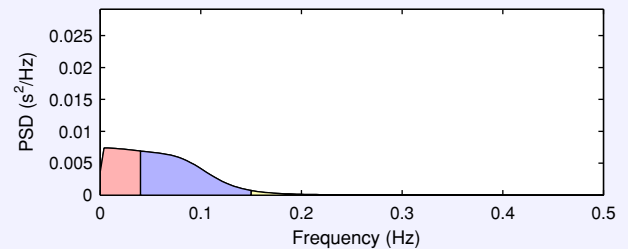
Frequency-Domain Results

FFT spectrum (Welch's periodogram: 256 s window with 50% overlap)



Frequency Band	Peak (Hz)	Power (ms ²)	Power (%)	Power (n.u.)
VLF (0-0.04 Hz)	0.0039	230	36.5	
LF (0.04-0.15 Hz)	0.0820	373	59.4	93.5
HF (0.15-0.4 Hz)	0.1523	26	4.1	6.5
Total		629		
LF/HF		14.364		

AR Spectrum (AR model order = 16, not factorized)

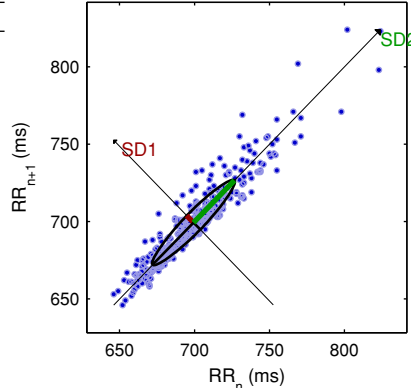


Frequency Band	Peak (Hz)	Power (ms ²)	Power (%)	Power (n.u.)
VLF (0-0.04 Hz)	0.0039	281	36.7	
LF (0.04-0.15 Hz)	0.0430	463	60.6	95.8
HF (0.15-0.4 Hz)	0.1523	20	2.7	4.2
Total		764		
LF/HF		22.762		

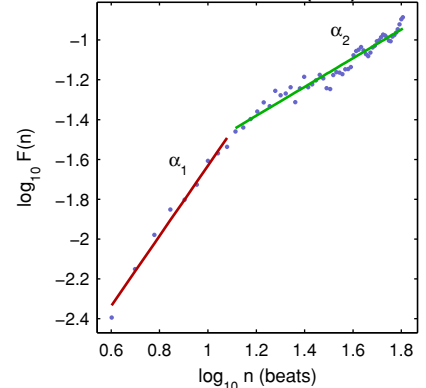
Nonlinear Results

Variable	Units	Value
Poincare plot		
SD1	(ms)	6.4
SD2	(ms)	38.6
Recurrence plot		
Mean line length (Lmean)	(beats)	12.15
Max line length (Lmax)	(beats)	333
Recurrence rate (REC)	(%)	41.20
Determinism (DET)	(%)	99.58
Shannon Entropy (ShanEn)		3.258
Other		
Approximate entropy (ApEn)		0.651
Sample entropy (SampEn)		0.661
Detrended fluctuations (DFA): α_1		1.763
Detrended fluctuations (DFA): α_2		0.723
Correlation dimension (D2)		0.469
Multiscale entropy (MSE)		0.661 - 2.443

Poincare Plot



Detrended fluctuations (DFA)



*Results are calculated from the non-detrended selected RR series.